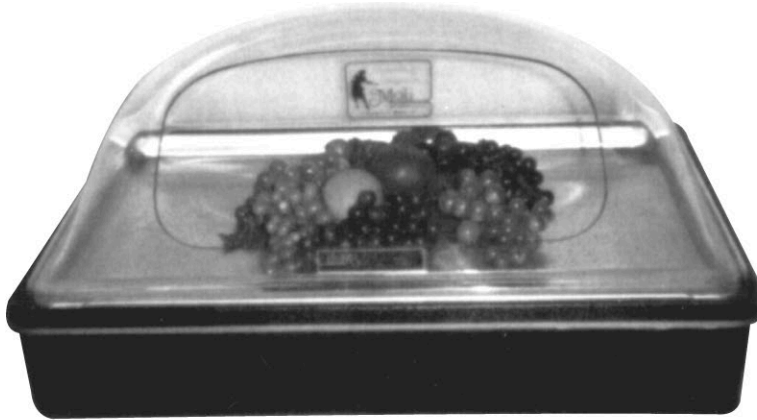


# Moli-international

*Presents*

## THE MOLI-MERCHANT



*PERFECT FOR*  
**\*RESTAURANTS**  
**\*SNACK BARS**  
**\*DELIS**  
**\*CATERERS**  
**\*SUPER MARKETS**

## Adapta Moli Merchant Compote

- Excellent to display and merchandise food products
- Attractive sneeze guard protection
- Display and serve cold or room temperature foods
- Perfect for buffet, salad and dessert service or in-store merchandising
- Insulated ice compartment
- Complete with full cover Moli-Shield or with cutout for self service
- 19" x 27" x 5 1/4" high - with cover 12 3/4" high
- Premium quality leather finish plastic
- Capacity 6 lbs. ice cubes
- May be purchased without pan or shield

Black..... Model no. BS-BS  
Walnut Brown.....Model no. BS-KS

Ship Complete Unit - U.P.S.



1150 W. Virginia Avenue . Denver, Colorado 80223 . Phone 303-777-0364  
1-800-525-8468 . Fax 303-777-0658 . [www.moliinternational.com](http://www.moliinternational.com)